

15990268

C. 334

H100
ISRA
2688



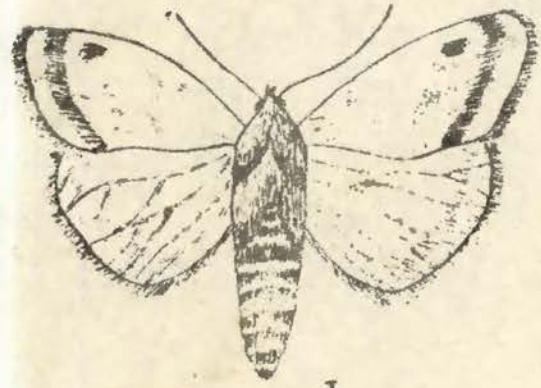
LES PARASITES DU COTONNIER



H100 - ISRA
2688

SECTEUR CENTRE SUD
IBRA
B.P. 199 KACLACK

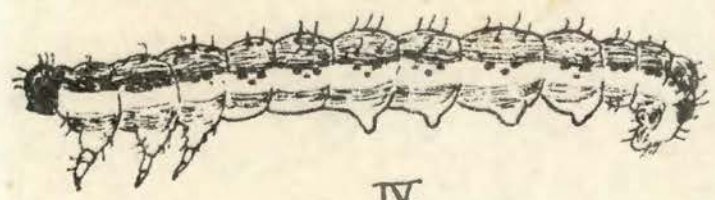
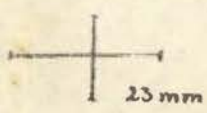
9



I



II

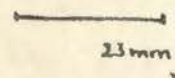


IV



25 mm

III



25 mm

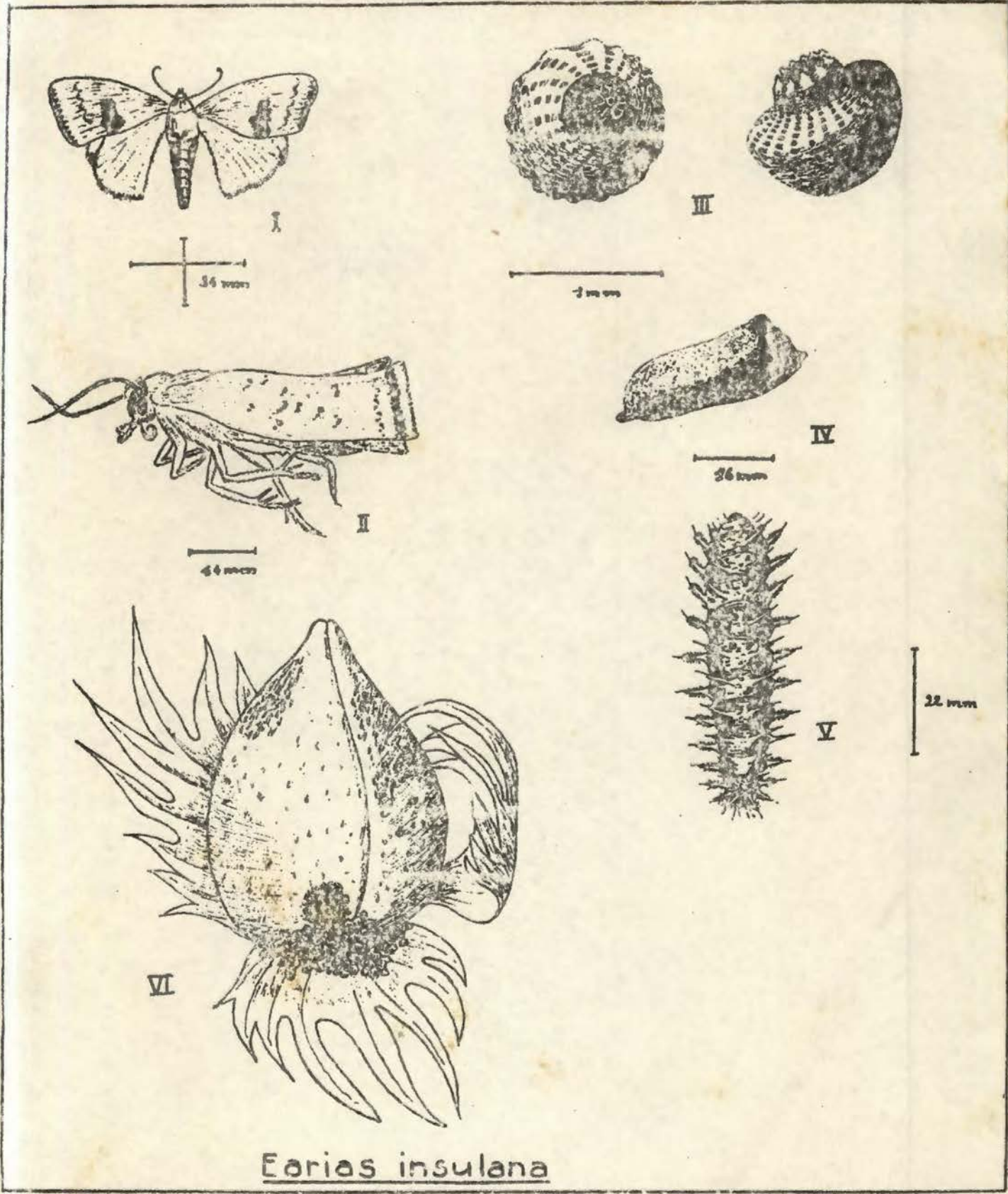


V

Heliothis armigera

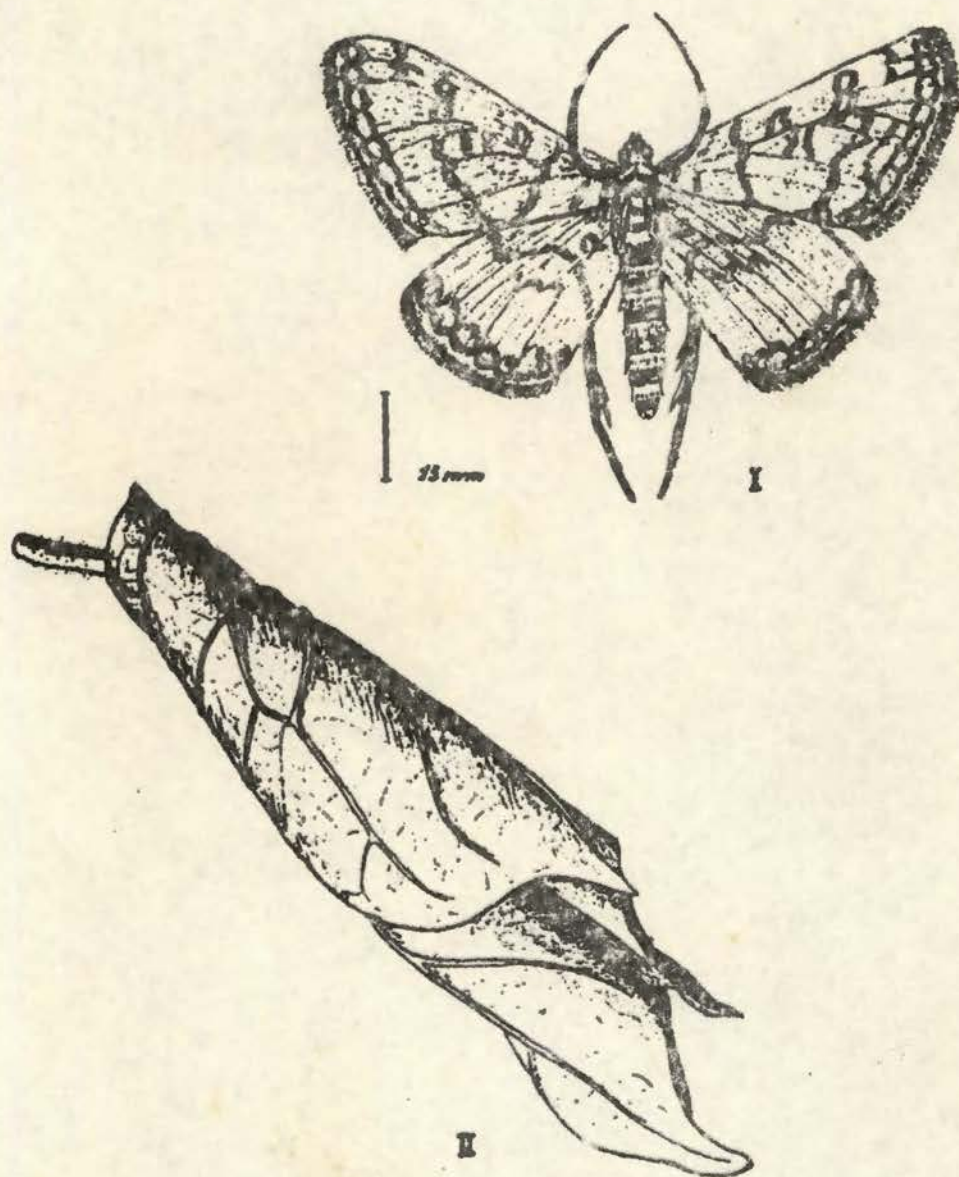
I Papillon . II Oeuf . III Chrysalide
IV Chenille . V Dégats sur capsule.

B. 617.



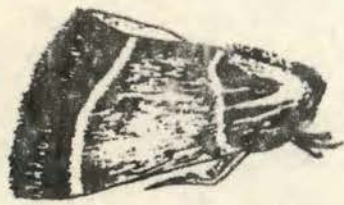
Earias insulana

I. II. Papillons . III Oeufs . IV. Chrysalide .
 V .Chenille VI .Capsule attequée.

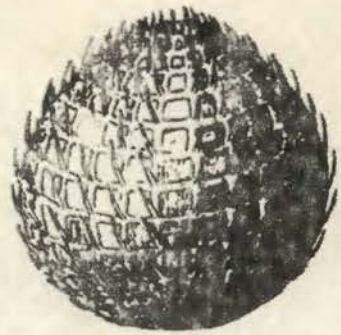


Sylepta derogata

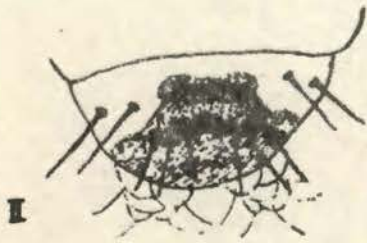
I Papillon . II Dégats sur feuille .



I
15 mm



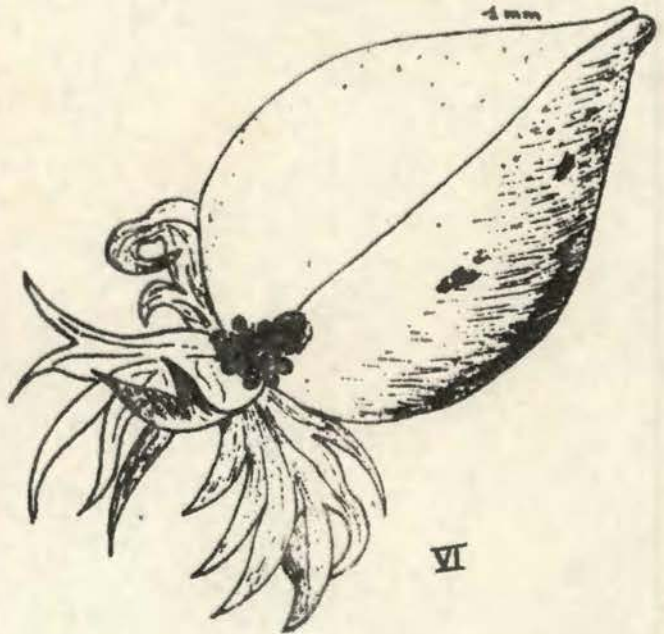
V
1 mm



II



III
16 mm



VI



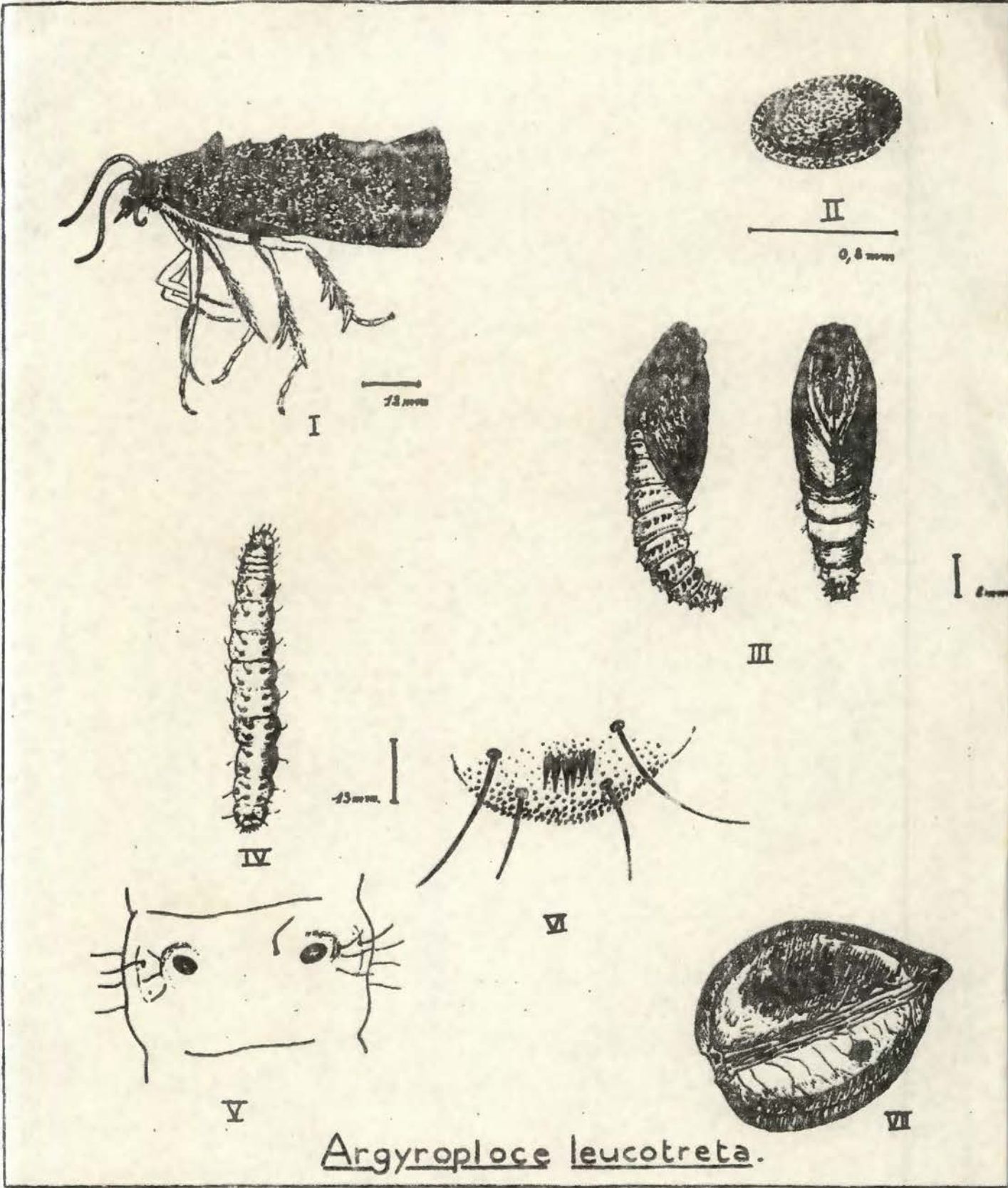
IV
4 mm



VII

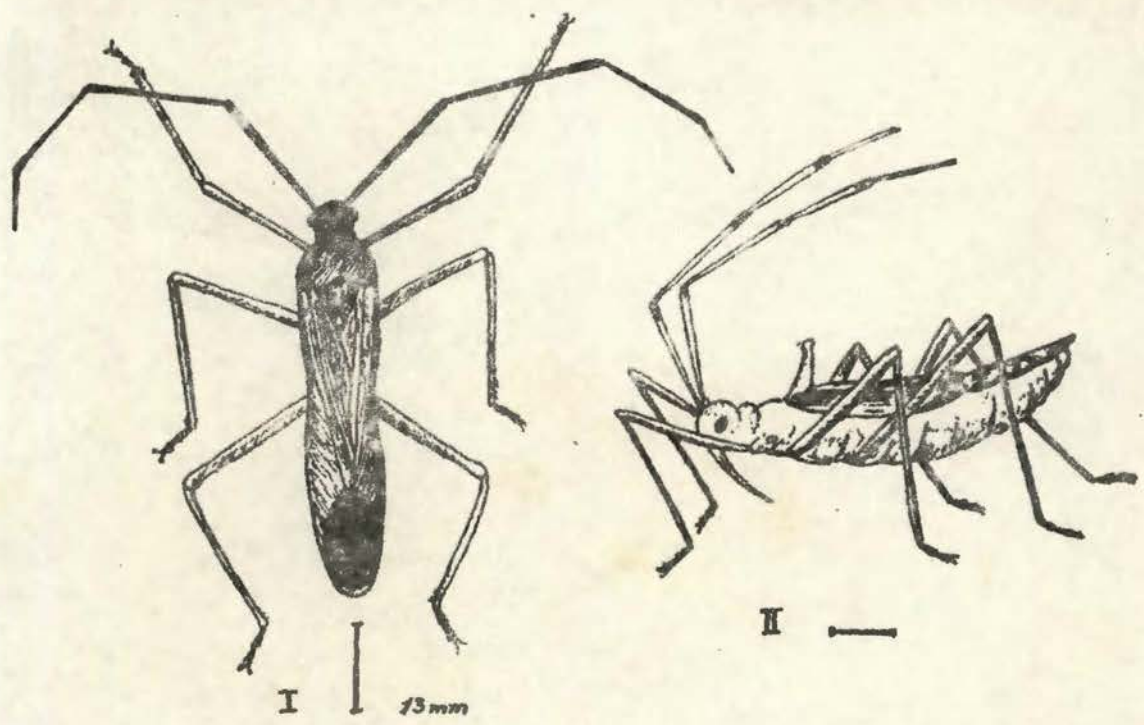
Diparopsis watersii

- I Papillon . II Plaque orale de la chenille . III Chenille . IV Chrysalide
 V Oeuf VI Capsule avec orifice d'entrée de la chenille .
 VII Dégâts causés par la chenille dans la capsule .



Argyroploce leucotreta.

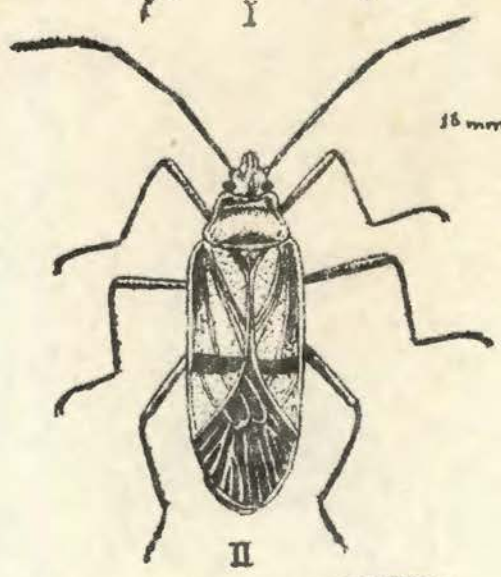
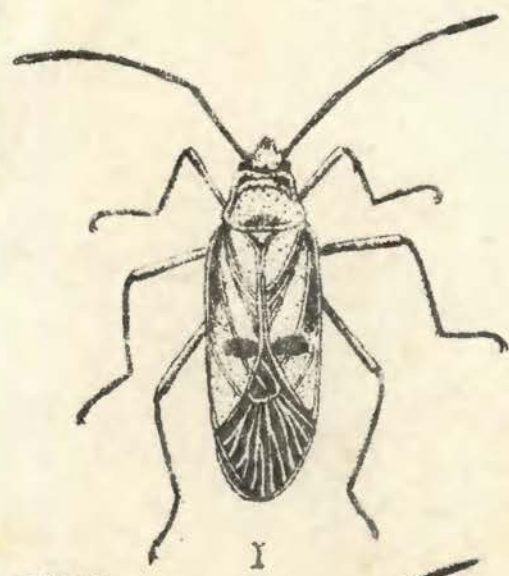
- I Papillon .
- II Oeuf .
- III Chrysalide
- IV Chenille .
- V Crochets des pattes abdominales de la chenille .
- VI Peigne anal de la chenille .
- VII Déjets sur capsule .



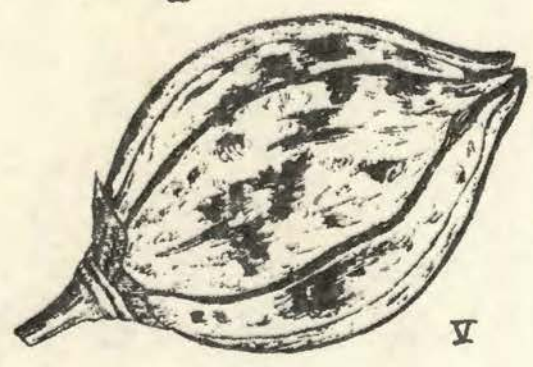
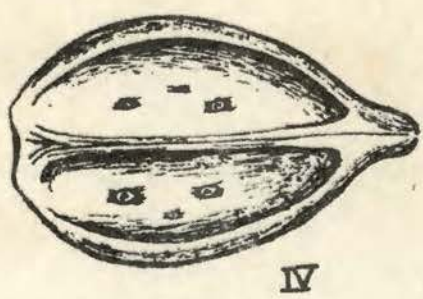
Helopeltis schoutedeni.

I. Insecte adulte . II Larve.
 III Capsule superficiellement attaquée . III fortement attaquée.

ENTOMOLOGICAL MUSEUM OF THE UNIVERSITY OF TORONTO
B.P. 199 KACLACK

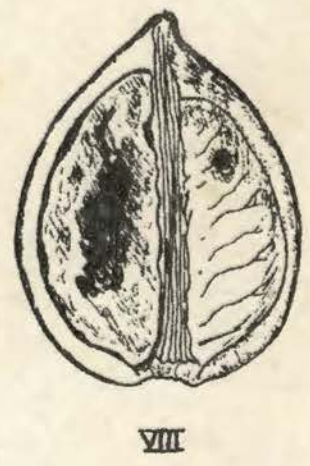
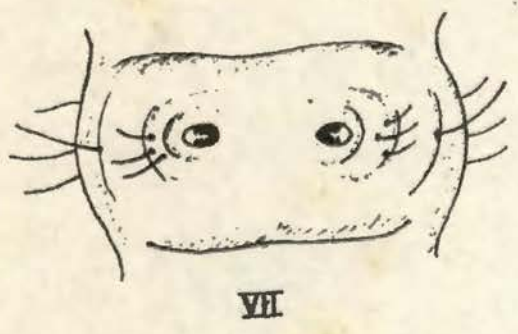
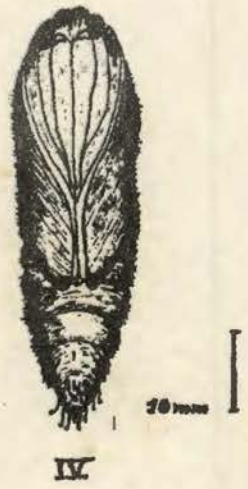
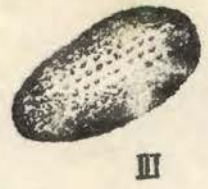
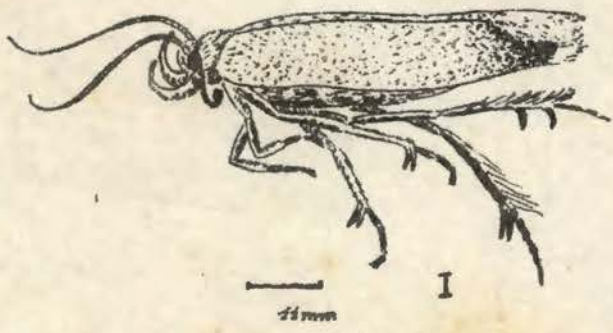


16 mm ♀ 13 mm ♂



Dysdercus supersticiosus
Dysdercus fasciatus

I. II. Insecte adulte (I: supersticiosus . II: fasciatus) III. Larve .
IV. Face intérieure de la paroi capsulaire avec piqûres .
V. Dégâts dans la capsule . VI . Capsule avec "quartiers d'orange" .



Platyedra gossypiella ou VER ROSE

- I. II Papillons
- III Oeuf
- IV Chrysalide.
- V Chenille .
- VI . VII Détails des pattes abdominales (chenille)
- VIII Dégats dans la capsule .



